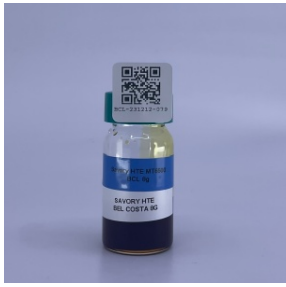


# CERTIFICATE OF ANALYSIS

\* FOR QUALITY ASSURANCE PURPOSES. NOT A CALIFORNIA COMPLIANCE CERTIFICATE.

PRODUCED: DEC 14, 2023

SAMPLE: SAVORY HTE MT6500 (EXTRACT) // CLIENT: ABSTRAX LABS LONG BEACH // BATCH: PASS



BATCH NO.: NAN  
 MATRIX: EXTRACT  
 CATEGORY: INHALABLE  
 SAMPLE ID: BCL-231212-079  
 COLLECTED ON: DEC 12, 2023  
 RECEIVED ON: DEC 12, 2023  
 SAMPLE SIZE: 1 UNITS

## CANNABINOID OVERVIEW

TOTAL THC:	52.06139 %
TOTAL CBD:	0.29593 %
TOTAL CANNABINOIDS <sup>††</sup> :	61.56904 %
SUM OF CANNABINOIDS <sup>†</sup> :	63.03127 %



## BCL-03: CANNABINOID POTENCY BY HPLC-UV // DEC 14, 2023

ANALYTE	AMT	AMT	LOD/LOQ (mg/g)	PASS/FAIL
CBC	1.77137 %	17.7137 mg/g	0.02176/0.49466	N/A
CBCA	0.98160 %	9.8160 mg/g	0.06233/0.49466	N/A
CBD	0.16640 %	1.6640 mg/g	0.03067/0.49466	N/A
CBDA	0.14770 %	1.4770 mg/g	0.01583/0.49466	N/A
CBDV	ND	ND	0.02374/0.49466	N/A
CBDVA	ND	ND	0.01583/0.49466	N/A
CBG	3.55184 %	35.5184 mg/g	0.02869/0.49466	N/A
CBGA	2.98457 %	29.8457 mg/g	0.01979/0.49466	N/A
CBN	0.17175 %	1.7175 mg/g	0.01583/0.49466	N/A
Δ <sup>8</sup> -THC	ND	ND	0.05738/0.49466	N/A
Δ <sup>9</sup> -THC	45.24347 %	452.4347 mg/g	0.04155/0.49466	N/A
THCA	7.77414 %	77.7414 mg/g	0.02968/0.49466	N/A
THCV	0.23843 %	2.3843 mg/g	0.03265/0.49466	N/A
THCVA	ND	ND	0.02275/0.49466	N/A
TOT THC**	52.06139 %	520.6139 mg/g		N/A
TOT CBD**	0.29593 %	2.9593 mg/g		N/A

## TERPENOID TESTING BY HS-GC/FID

ANALYTE	AMT	AMT	LOD/LOQ ( )	PASS/FAIL
TOTAL TERPENES	ND	ND		N/A
α-PINENE	NT	NT		N/A
CAMPHENE	NT	NT		N/A
β-PINENE	NT	NT		N/A
β-MYRCENE	NT	NT		N/A
Δ <sup>3</sup> -CARENE	NT	NT		N/A
α-TERPINENE	NT	NT		N/A
D-LIMONENE	NT	NT		N/A
P-CYMENE	NT	NT		N/A
α-OCIMENE*	NT	NT		N/A
β-OCIMENE*	NT	NT		N/A
γ-TERPINENE	NT	NT		N/A
TERPINOLENE	NT	NT		N/A
LINALOOL	NT	NT		N/A
ISOPULEGOL	NT	NT		N/A
GERANIOL	NT	NT		N/A
β-CARYOPHYLLENE	NT	NT		N/A
α-HUMULENE	NT	NT		N/A
CIS-NEROLIDOL	NT	NT		N/A
TRANS-NEROLIDOL	NT	NT		N/A
GUAJOL	NT	NT		N/A
α-BISABOLOL	NT	NT		N/A
1,8-CINEOLE*	NT	NT		N/A

\*\* TOTAL THC = DELTA-8-THC + (DELTA-8-THCA X 0.877) + DELTA-9-THC + (THCA X 0.877)

\*\* TOTAL CBD = CBD + (CBDA X 0.877)

† SUM OF CANNABINOIDS = CBC + CBCA + CBD + CBDA + CBDV + CBDVA + CBG + CBGA + CBN + DELTA-8-THC + DELTA-9-THC + THCA + THCV + THCVA

†† TOTAL CANNABINOIDS = (CBC + CBD + CBDV + CBG + CBN + DELTA-8-THC + DELTA-9-THC + THCV) + (0.877 \* (CBCA + CBDA + CBDVA + CBGA + THCA + THCVA))

\* BEYOND SCOPE OF ACCREDITATION

SAMPLE WAS TESTED AS RECEIVED. THE RESULTS RELATE ONLY TO THE ITEMS TESTED. ALL LQC SAMPLES REQUIRED BY SECTION 15730 OF CALIFORNIA CODE OF REGULATIONS TITLE 4 DIVISION 19 DEPARTMENT OF CANNABIS CONTROL WERE PERFORMED AND MET THE ACCEPTANCE CRITERIA. ALL DECISION RULES ARE ESTABLISHED BY THE DCC.

RESULTS CERTIFIED BY: DZOANA KLISARA, B.SC.  
 LABORATORY DIRECTOR, BELCOSTA LABS  
 DEC 14, 2023

*Dzoana Klisara*



**BCL-13: PESTICIDE TESTING BY GC/MS // DEC 14, 2023**

ANALYTE	LIMIT	AMT (µg/g)	LOD/LOQ (µg/g)	PASS/FAIL
CAPTAN	0.7 µg/g	ND	0.03082/0.09334	PASS
CHLORDANE	Any amt	ND		PASS
CHLORDANE CIS		ND	0.0109/0.03305	N/A
CHLORDANE TRANS		ND	0.01043/0.03152	N/A
CHLORFENAPYR	Any amt	ND	0.0235/0.07113	PASS

ANALYTE	LIMIT	AMT (µg/g)	LOD/LOQ (µg/g)	PASS/FAIL
CHLORPYRIFOS	Any amt	ND	0.01096/0.03328	PASS
DICHLORVOS	Any amt	ND	0.01154/0.03498	PASS
METHYL PARATHION	Any amt	ND	0.01324/0.04014	PASS
PENTACHLORONI-TROBENZENE	0.1 µg/g	ND	0.01377/0.04178	PASS

**BCL-05: RESIDUAL PESTICIDE ANALYSIS BY LC-MS/MS ESI // DEC 14, 2023**

ANALYTE	LIMIT	AMT (µg/g)	LOD/LOQ (µg/g)	PASS/FAIL
ABAMECTIN	0.1 µg/g	ND	0.0244/0.07393	PASS
ACEPHATE	0.1 µg/g	ND	0.01224/0.0371	PASS
ACEQUINOCYL	0.1 µg/g	ND	0.01993/0.06038	PASS
ACETAMIPRID	0.1 µg/g	ND	0.0043/0.01302	PASS
ALDICARB	Any amt	ND	0.01219/0.03693	PASS
AZOXYSTROBIN	0.1 µg/g	ND	0.00771/0.02337	PASS
BIFENAZATE	0.1 µg/g	ND	0.00373/0.01131	PASS
BIFENTHRIN	3 µg/g	ND	0.01267/0.03839	PASS
BOSCALID	0.1 µg/g	ND	0.01406/0.04261	PASS
CARBARYL	0.5 µg/g	ND	0.00615/0.01865	PASS
CARBOFURAN	Any amt	ND	0.00411/0.01246	PASS
CHLORANTRANIL-IPROLE	10 µg/g	ND	0.01069/0.0324	PASS
CLOFENTEZINE	0.1 µg/g	ND	0.01404/0.04256	PASS
COUMAPHOS	Any amt	ND	0.01952/0.05914	PASS
CYFLUTHRIN	2 µg/g	ND	0.1511/0.45788	PASS
CYPERMETHRIN	1 µg/g	ND	0.02284/0.06921	PASS
DAMINOZIDE	Any amt	ND	0.0237/0.07182	PASS
DIAZINON	0.1 µg/g	ND	0.0027/0.00818	PASS
DIMETHOATE	Any amt	ND	0.00353/0.01069	PASS
DIMETHOMORPH	2 µg/g	ND		PASS
DIMETHOMORPH I		ND	0.00554/0.01679	N/A
DIMETHOMORPH II		ND	0.00327/0.00992	N/A
ETHOPROPHOS	Any amt	ND	0.00632/0.01914	PASS
ETOFENPROX	Any amt	ND	0.00604/0.01831	PASS
ETOXAZOLE	0.1 µg/g	ND	0.00363/0.01099	PASS
FENHEXAMID	0.1 µg/g	ND	0.01344/0.04073	PASS
FENOXYCARB	Any amt	ND	0.0047/0.01423	PASS
FENPYROXIMATE	0.1 µg/g	ND	0.00277/0.0084	PASS
FIPRONIL	Any amt	ND	0.00678/0.02054	PASS
FLONICAMID	0.1 µg/g	ND	0.0046/0.01393	PASS
FLUDIOXONIL	0.1 µg/g	ND	0.03245/0.09834	PASS
HEXYTHIAZOX	0.1 µg/g	ND	0.00409/0.01238	PASS
IMAZALIL	Any amt	ND	0.012/0.03637	PASS
IMIDACLOPRID	5 µg/g	ND	0.00796/0.02411	PASS
KRESOXIM-METHYL	0.1 µg/g	ND	0.00989/0.02997	PASS
MALATHION	0.5 µg/g	0.0780	0.00701/0.02124	PASS

ANALYTE	LIMIT	AMT (µg/g)	LOD/LOQ (µg/g)	PASS/FAIL
METALAXYL	2 µg/g	ND	0.0058/0.01757	PASS
METHIOCARB	Any amt	ND	0.00885/0.02681	PASS
METHOMYL	1 µg/g	ND	0.00837/0.02537	PASS
MEVINPHOS	Any amt	ND		PASS
MEVINPHOS I		ND	0.001/0.00303	N/A
MEVINPHOS II		ND	0.00529/0.01603	N/A
MYCLOBUTANIL	0.1 µg/g	ND	0.01719/0.0521	PASS
NALED	0.1 µg/g	ND	0.01059/0.0321	PASS
OXAMYL	0.5 µg/g	ND	0.00617/0.01869	PASS
PACLOBUTRAZOL	Any amt	ND	0.01076/0.03262	PASS
PERMETHRIN	0.5 µg/g	ND		PASS
PERMETHRIN CIS		ND	0.00993/0.03008	N/A
PERMETHRIN TRANS		ND	0.01265/0.03833	N/A
PHOSMET	0.1 µg/g	ND	0.00601/0.01822	PASS
PIPERONYLBUTO-XIDE	3 µg/g	ND	0.00261/0.00791	PASS
PRALLETHRIN	0.1 µg/g	ND	0.00989/0.02996	PASS
PROPICONAZOLE	0.1 µg/g	ND	0.00577/0.01747	PASS
PROPOXUR	Any amt	ND	0.00593/0.01798	PASS
PYRETHRINS	0.5 µg/g	ND		PASS
PYRETHRINS PYRETHRIN I		ND	0.00435/0.01318	N/A
PYRETHRINS PYRETHRIN II		ND	0.00386/0.01169	N/A
PYRIDABEN	0.1 µg/g	ND	0.00388/0.01176	PASS
SPINETORAM	0.1 µg/g	ND		PASS
SPINETORAM J		ND	0.00694/0.02103	N/A
SPINETORAM L		ND	0.00902/0.02734	N/A
SPINOSAD	0.1 µg/g	ND		PASS
SPINOSAD A		ND	0.00799/0.02422	N/A
SPINOSAD D		ND	0.00275/0.00834	N/A
SPIROMESIFEN	0.1 µg/g	ND	0.00693/0.021	PASS
SPIROTETRAMAT	0.1 µg/g	ND	0.00537/0.01627	PASS
SPIROXAMINE	Any amt	ND	0.00549/0.01663	PASS
TEBUCONAZOLE	0.1 µg/g	ND	0.00874/0.02647	PASS
THIACLOPRID	Any amt	ND	0.00458/0.01389	PASS
THIAMETHOXAM	5 µg/g	ND	0.00395/0.01196	PASS
TRIFLOXYSTROB-IN	0.1 µg/g	ND	0.00354/0.01072	PASS



**BCL-18: RESIDUAL SOLVENTS ANALYSIS BY HS-GC-MS // DEC 14, 2023**

ANALYTE	LIMIT	AMT (µg/g)	LOD/LOQ (µg/g)	PASS/FAIL
1,2-DICHLOROETHANE	1 µg/g	ND	0.17057/0.595	PASS
ACETONE	5000 µg/g	< LOQ	19.19873/59.5002	PASS
ACETONITRILE	410 µg/g	ND	17.03689/59.5002	PASS
BENZENE	1 µg/g	ND	0.07537/0.595	PASS
BUTANE	5000 µg/g	87.244	17.96509/59.5002	PASS
CHLOROFORM	1 µg/g	ND	0.17453/0.595	PASS
ETHANOL	5000 µg/g	102.313	14.72828/59.5002	PASS
ETHYL ACETATE	5000 µg/g	< LOQ	18.18723/59.5002	PASS
ETHYLENE OXIDE	1 µg/g	ND	0.1904/0.595	PASS
ETHYL ETHER	5000 µg/g	ND	16.02142/59.5002	PASS
HEPTANE	5000 µg/g	ND	14.01825/59.5002	PASS
HEXANE	290 µg/g	ND	21.58271/99.167	PASS
ISOPROPYL ALCOHOL	5000 µg/g	ND	14.87505/59.5002	PASS
METHANOL	3000 µg/g	ND	13.33994/59.5002	PASS
METHYLENE CHLORIDE	1 µg/g	ND	0.15073/0.595	PASS
PENTANE	5000 µg/g	ND	32.80444/99.167	PASS
PROPANE	5000 µg/g	ND	16.94962/59.5002	PASS
TOLUENE	890 µg/g	ND	9.36533/59.5002	PASS
TRICHLOROETHYLENE	1 µg/g	ND	0.07933/0.595	PASS
O-XYLENE		ND	4.43475/29.7501	N/A
P- AND M-XYLENE		ND	4.10948/29.7501	N/A
TOTAL XYLENES	2170 µg/g	ND		PASS

**BCL-020: HEAVY METAL TESTING BY ICP-MS // DEC 13, 2023**

ANALYTE	LIMIT	AMT (µg/g)	LOD/LOQ (µg/g)	PASS/FAIL
ARSENIC	0.2 µg/g	ND	0.001/0.05	PASS
CADMIUM	0.2 µg/g	< LOQ	0.0002/0.05	PASS
LEAD	0.5 µg/g	0.065	0.0003/0.05	PASS
MERCURY	0.1 µg/g	ND	0.0001/0.01	PASS

**ACCREDITATIONS**



**A2LA ACCREDITED**

- BCL-020: HEAVY METAL TESTING BY ICP-MS
- BCL-03: CANNABINOID POTENCY BY HPLC-UV
- BCL-05: MYCOTOXIN TESTING BY LC-MS/MS
- BCL-05: RESIDUAL PESTICIDE ANALYSIS BY LC-MS/MS ESI

- BCL-06: MICROBIOLOGICAL ANALYSIS BY QPCR
- BCL-07: FOREIGN MATERIAL TESTING BY MICROSCOPY
- BCL-13: PESTICIDE TESTING BY GC/MS
- BCL-18: RESIDUAL SOLVENTS ANALYSIS BY HS-GC-MS

\* FOR QUALITY ASSURANCE PURPOSES. NOT A CALIFORNIA COMPLIANCE CERTIFICATE.

**BCL-07: FOREIGN MATERIAL TESTING BY MICROSCOPY // DEC 13, 2023**

ANALYTE	LIMIT	AMT (%)	PASS/FAIL
IMBEDDED FOREIGN MATERIAL	25 %	ND	PASS
INSECT FRAGMENTS, HAIR, MAMMAL EXCREMENT	1 Unit	ND	PASS
MOLD	25 %	ND	PASS
SAND, SOIL, CINDERS, DIRT	25 %	ND	PASS

**BCL-06: MICROBIOLOGICAL ANALYSIS BY QPCR // DEC 14, 2023**

ANALYTE	LIMIT	AMT (CFU)	PASS/FAIL
ASPERGILLUS FLAVUS	Any amt in 1 gram	ND	PASS
ASPERGILLUS FUMIGATUS	Any amt in 1 gram	ND	PASS
ASPERGILLUS NIGER	Any amt in 1 gram	ND	PASS
ASPERGILLUS TERREUS	Any amt in 1 gram	ND	PASS
SALMONELLA SPP.	Any amt in 1 gram	ND	PASS
SHIGA TOXIN-PRODUCING E. COLI	Any amt in 1 gram	ND	PASS

**BCL-05: MYCOTOXIN TESTING BY LC-MS/MS // DEC 14, 2023**

ANALYTE	LIMIT	AMT (µg/kg)	LOD/LOQ (µg/kg)	PASS/FAIL
AFLATOXIN B1		ND	1.97/5.96	N/A
AFLATOXIN B2		ND	1.32/3.99	N/A
AFLATOXIN G1		ND	1.6/4.86	N/A
AFLATOXIN G2		ND	1.46/4.44	N/A
AFLATOXINS	20 µg/kg	ND		PASS
OCHRATOXIN A	20 µg/kg	ND	1.35/4.08	PASS

